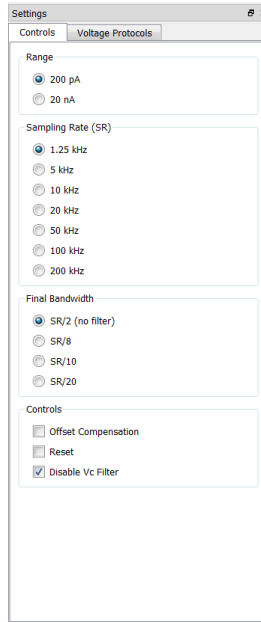
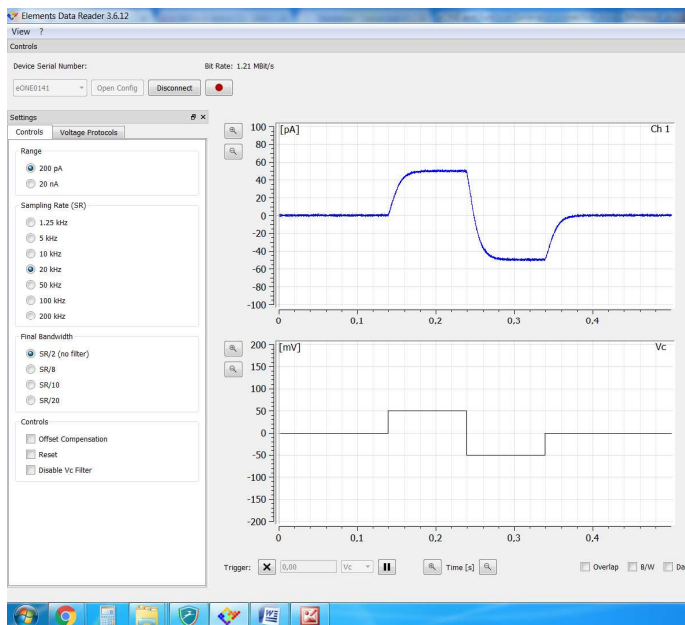


eONE-XV: HOW TO USE THE V_c FILTER CHECKBOX

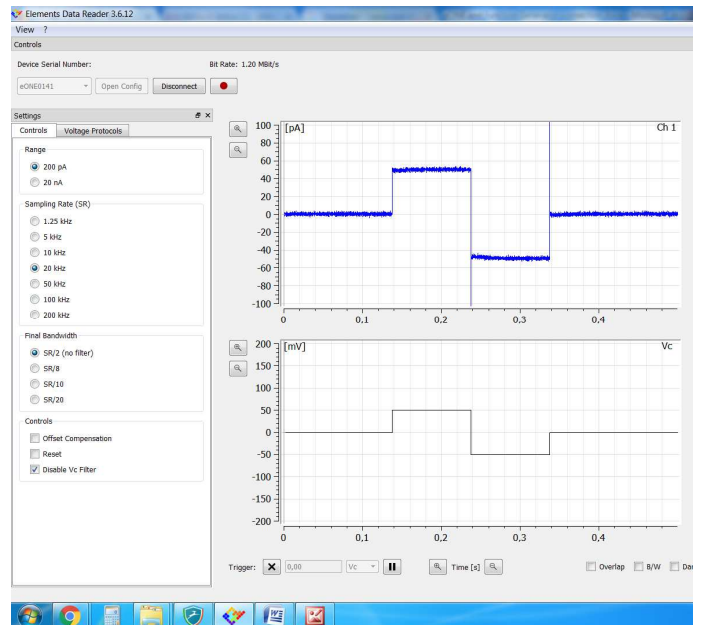
The "Disable Vc Filter" is a switch present only if you use the "eONE-XV-V14_HB.ccf2" config file.



The "Disable Vc Filter" is located in the Controls tab of EDR window. It controls the filter at the output of the V_c circuitry generator. Normally, the filter is active always (an all the voltage protocols), so the bandwidth of the voltage stimuly is limited to 10 Hz.

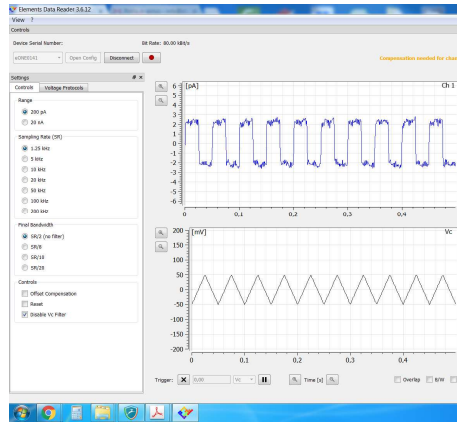
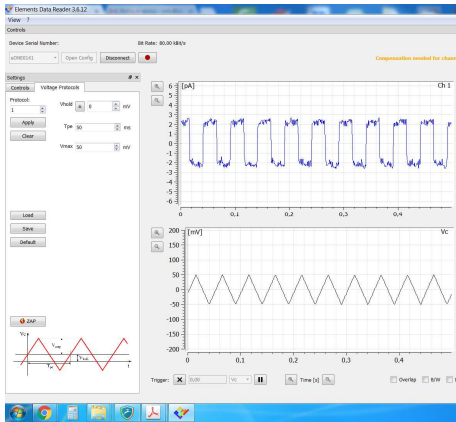


V_c filter enabled

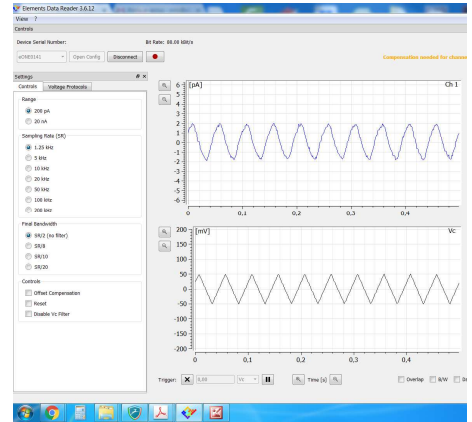


V_c filter disabled

Vc: triangular wave

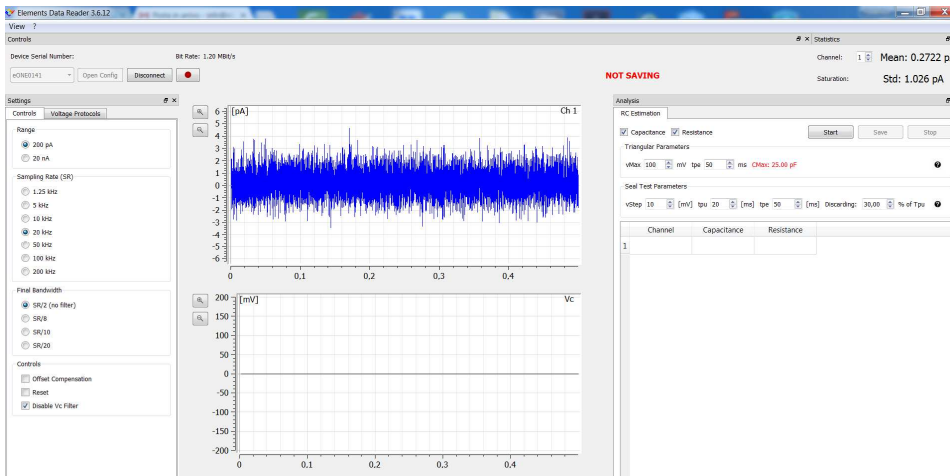


Vc filter disabled

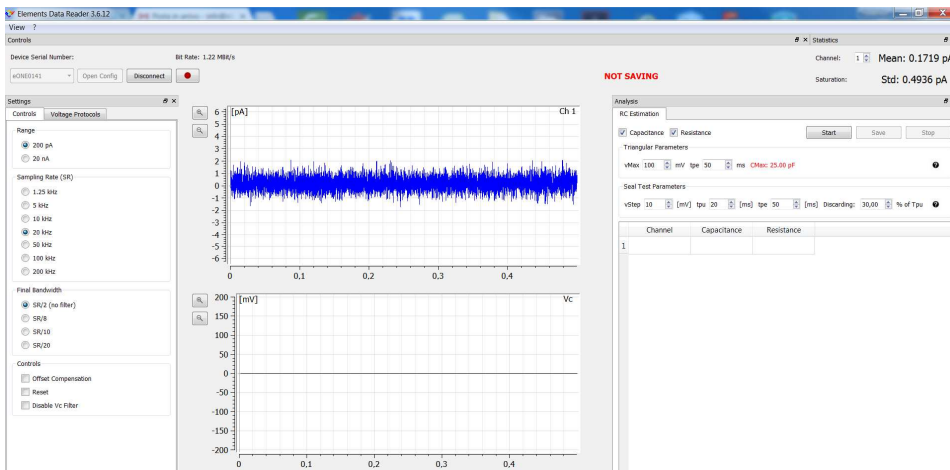


Vc filter enabled

We recommend to use the filter (filter enabled, checkbox unchecked) when you apply a constant voltage, in order to reduce the RMS noise on the current measurement.



1GΩ connected at the input.
Filter disabled, total noise
1pA RMS at 10kHz.



1GΩ connected at the input.
Filter enabled, total noise
0.5 pA RMS at 10kHz.