

---

# Voltage protocols

## Revision History

Date	Version	Description
15/04/2021	1.0	First version of document

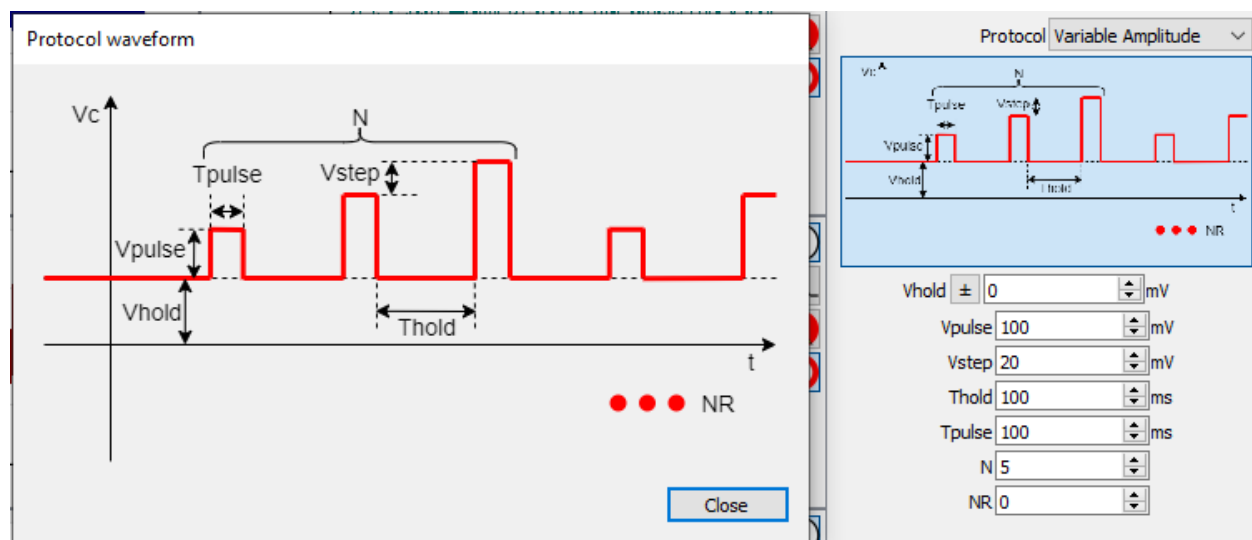


## Protocol design

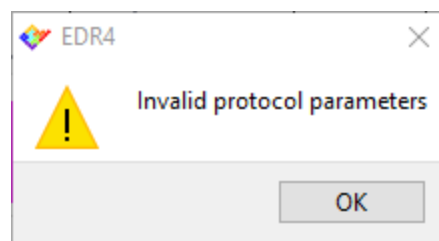
The Voltage stimulus widget contains a complete set of parametric voltage stimulus protocols.

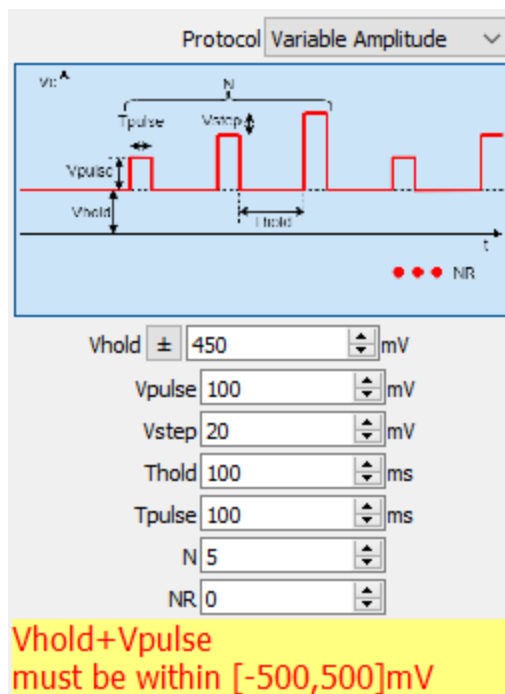
For each automatic voltage protocol the different parameters represented in the protocol descriptive image can be set.

When the mouse hovers over the small voltage protocol image a bigger image appears. This image can be kept open by clicking on the small image and can be moved in a different position. This way, it will be easier to set all the parameters while keeping the bigger image opened for reference.




While the parameters are changed the software performs a set of checks to verify that the designed protocol is actually applicable. A warning message is displayed if the parameters are invalid and a popup window opens if the user tries to apply an invalid protocol.






## Apply a voltage protocol


Once the desired protocol is selected and designed click the start button  to start applying the voltage protocol. A protocol can be started also by pressing enter or return, unless the widget currently focused has a different use for those keys (for example the lab book will add a note).

To quickly select and apply a protocol when the experiment is running, keyboard shortcut Ctrl + 'Protocol Number' can be used. For instance Ctrl + '1' will select and apply protocol number 1.

By clicking the pause button  the voltage protocol will be interrupted, so a constant null voltage will be applied instead.

## Save and Load protocols

Commonly used protocols and their parameters can be saved for future usage by clicking on the

Save button . This will create a .txt file with the parameters of the saved voltage protocol that can be easily loaded on following EDR4 sessions.



---

Saved protocols can be loaded by using the load button



In order to restore the protocols default values click the restore default button

